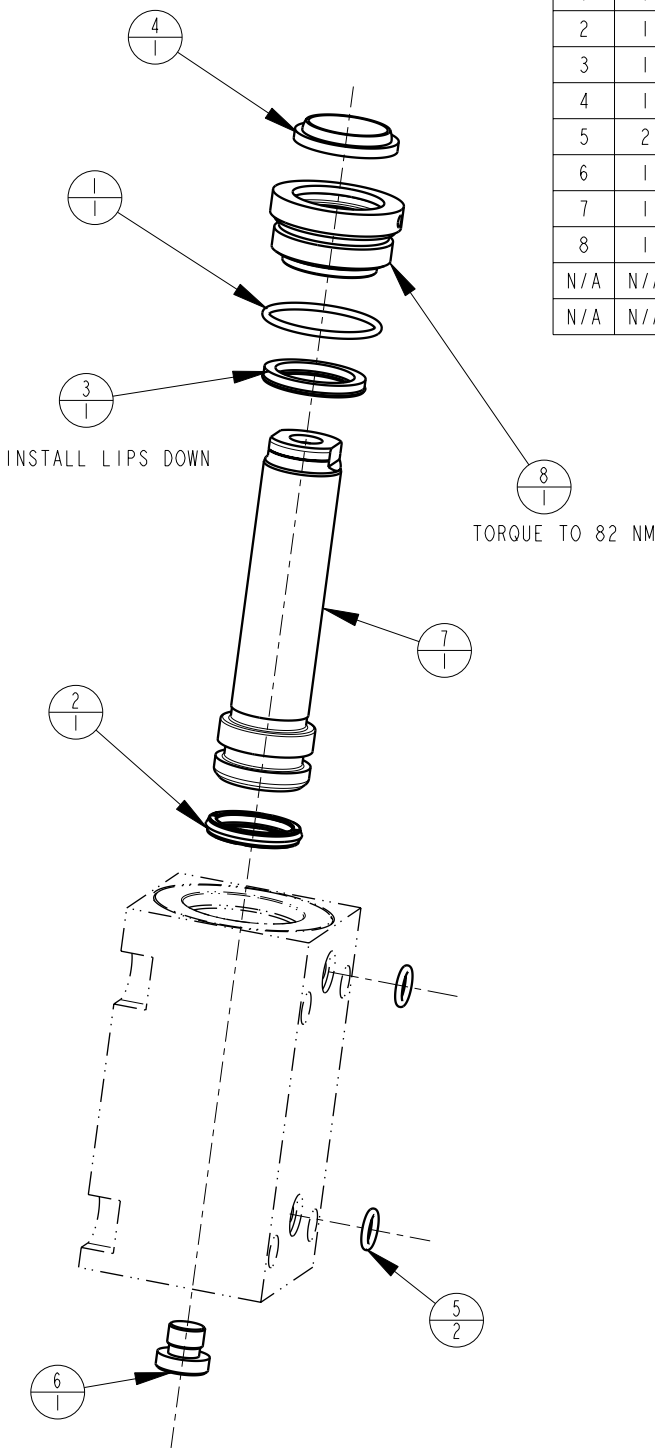



| MODEL NO. | | | MODEL NAME |
|-----------|-----|----------|--|
| 42112004 | | | ASSY,CYL, BB, MM, 17,8KN, 51 STRK,DA |
| NO. | QTY | PART NO. | DESCRIPTION |
| 1 | 1 | 39001011 | O-RING, (-024) |
| 2 | 1 | 39010017 | SEAL,CROWN,13/16x1x5/32 |
| 3 | 1 | 39011045 | SEAL, LL, (13/16 X 1/8 X 1/8 X 1-1/16) |
| 4 | 1 | 39012008 | WIPER,SNAP-IN, (13/16) |
| 5 | 2 | 39050042 | O-RING, (-011) |
| 6 | 1 | 43068004 | PLUG, 1/8 BSPP |
| 7 | 1 | 48011002 | METRIC PISTON, CYL., 51,0 STRK., 17,8 kN |
| 8 | 1 | 82031002 | GLAND,CYL, 3900 & 17.8 KN |
| N/A | N/A | 60210401 | KIT, SEAL, BB, 17,8 KN, DA |
| N/A | N/A | 6V210210 | KIT, SEAL, BB, 3900/17,8 KN, DA, FKM |



2. ALL SEALS, O-RINGS, AND WIPERS ARE INCLUDED IN THE STANDARD OR FKM SEAL KIT.
1. APPLY LUBRICANT TO ALL SEALS PRIOR TO ASSEMBLY (DO NOT USE SILICONE TYPE LUBRICANTS).

NOTE:

| | |
|-----------------------------------|---|
| PARTS LIST |  VEKTEK, INC. 1334 E. SIXTH AVE. P.O. BOX 625 EMPORIA, KS. 66801 U.S.A. |
| | PARTS LIST, BB, MM, 17,8 KN, DA SIZE A MPLV2161 REV B |
| ASSEMBLIES AFFECTED 42-1120-04 | FORM FEG035_PL_ASIZE, REV. B |

| | | | | |
|---------|------------------------|--|------------|---------|
| B | 2625 | RELEASE | GAR | 2/28/14 |
| REV | IN ACCORDANCE WITH ECN | EFFECTIVE DATE | REVISED BY | DATE |
| DRW BY: | G. ROMINE | DRAWING STATUS: Released | | |
| DATE: | 11/19/07 | PRODUCTION APPROVED FOR RELEASED STATUS ONLY | | |